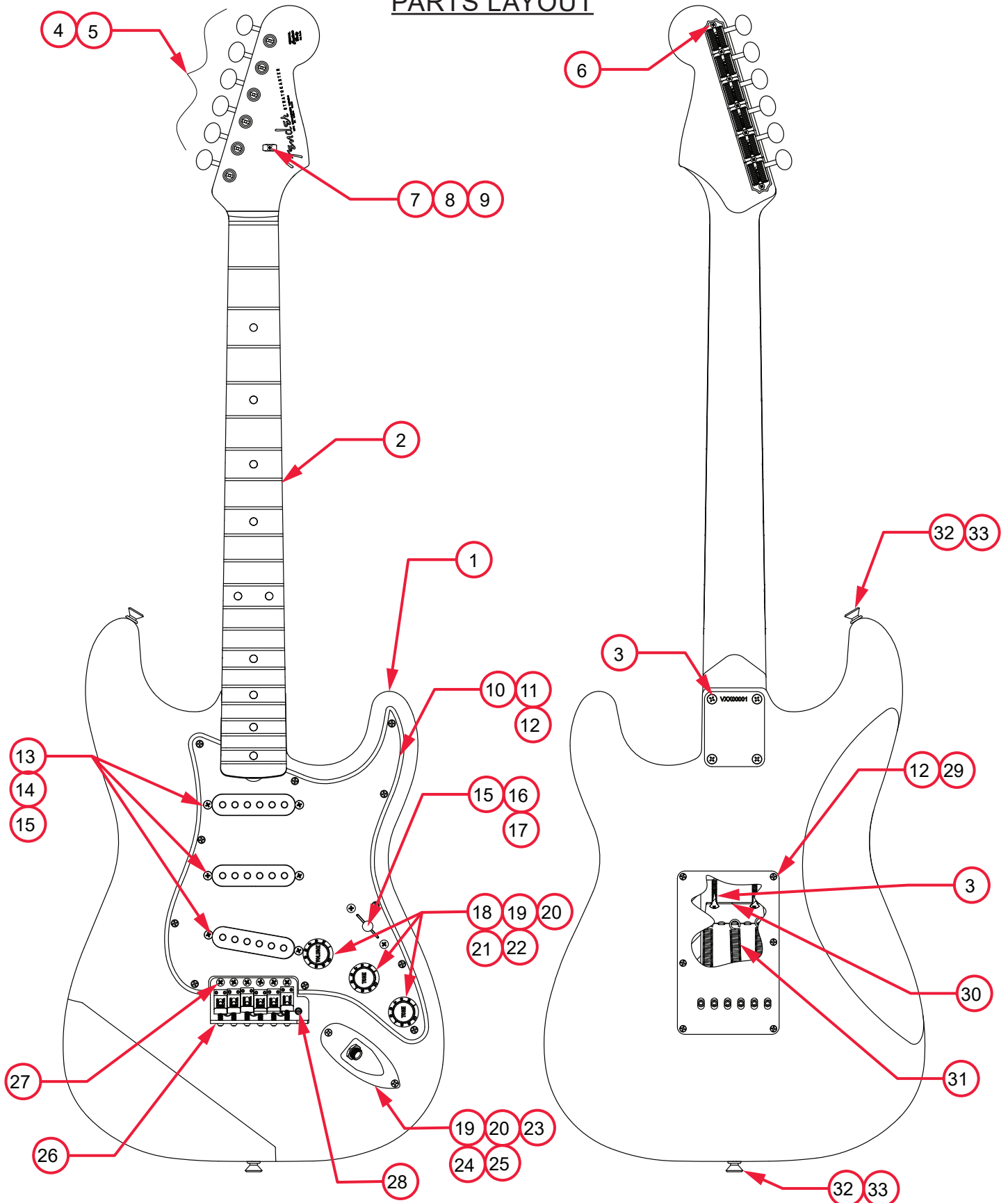


AMERICAN VINTAGE II 1961 STRATOCASTER® (0110250XXX)

PARTS LAYOUT



AMERICAN VINTAGE II 1961 STRATOCASTER® (0110250XXX)

PARTS LIST

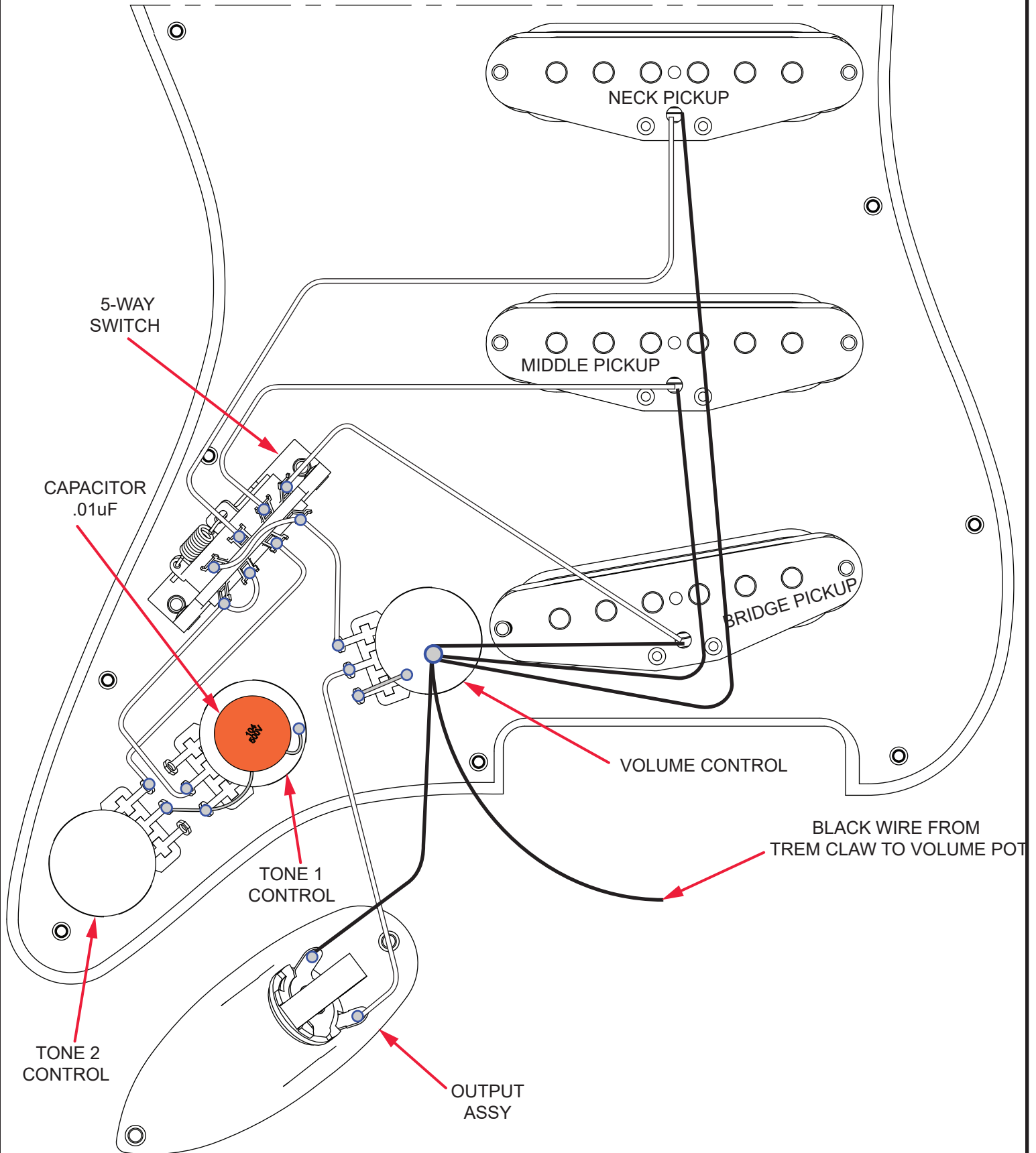
REF#	DESCRIPTION	PART NUMBER
1	BODY AM VINT II 1961 STRAT 3TS	7721667500
1	BODY AM VINT II 1961 STRAT OWT	7721666505
1	BODY AM VINT II 1961 STRAT FRD	7721666540
2	NECK ASSY AM VINT II 61 STRAT RW	7721669000
3	SCREW SMA 8 X 1-3/4 OHP NI	0015636049
4	KEY GUITAR NI FENDER LOGO SET W/HDWR	0992074000
5	BUSHING STRING POST VINT SET	0994946000
6	SCREW SMAB 3 X 3/8 RHP NI	0011357049
7	STRING TREE VINTAGE NI W/HDWR	0992083000
8	SPACER STRING TREE 62 STRAT	0020423000
9	SCREW SMA 3 X 5/8 RHP NI	0011358049
10	PICKGAURD VINTAGE 62 STRAT MG/B/MG	0991343000
11	SHIELD PICKGUARD 62 STRAT	0019699049
12	SCREW SMAB 4 X 1/2 OHP NI	0015578049
13	PICKUP ASSY AM VINT II 61 STRAT	7721671000
14	TUBING LATEX CUT .300 X 1/8ID X 1/4 OD	0994916000
15	SCREW MACH 6-32 X 5/8 OHP NI	0015776049
16	SWITCH 5-WAY LEVER	0038929049
17	KNOB P/U SWITCH VINT AGED WHT	0994938000
18	CONTROL 250K 10% TPR SPLIT	0990830000
19	WASHER LOCK INTL 3/8 X .687	0016436049
20	NUT HEX 3/8-32 X 3/32 TK NI	0016352049
21	KNOB STRAT (1) VOL (2) TONE AGED WHITE	0991369000
22	CAP CERAMIC DISC .1MFD 50V	0094393000
23	FERRULE JACK CHROME	0991940100
24	JACK PHONE OPEN CIRCUIT 11	0021956049
25	SCREW SMA 5 X 5/8 OHP NI	0015602049
26	BRIDGE ASSY AM VINT STRAT CHR	0094247049
26A	BRIDGE PLATE VINT STRAT	0019470000
26B	BRIDGE BLOCK VINT STRAT	0019473049
26C	SCREW MACH 8-32 X 3/8 FHP NI	0019656049
26D	BRIDGE SADDLES SHORT/TALL SET W/HDWR	0992091000
26E	SCREW MACH 4-40 X 5/8 RHP NI	0015693049

*= NOT PICTURED IN DIAGRAM



AMERICAN VINTAGE II 1961 STRATOCASTER® (0110250XXX)

WIRING ASSEMBLY

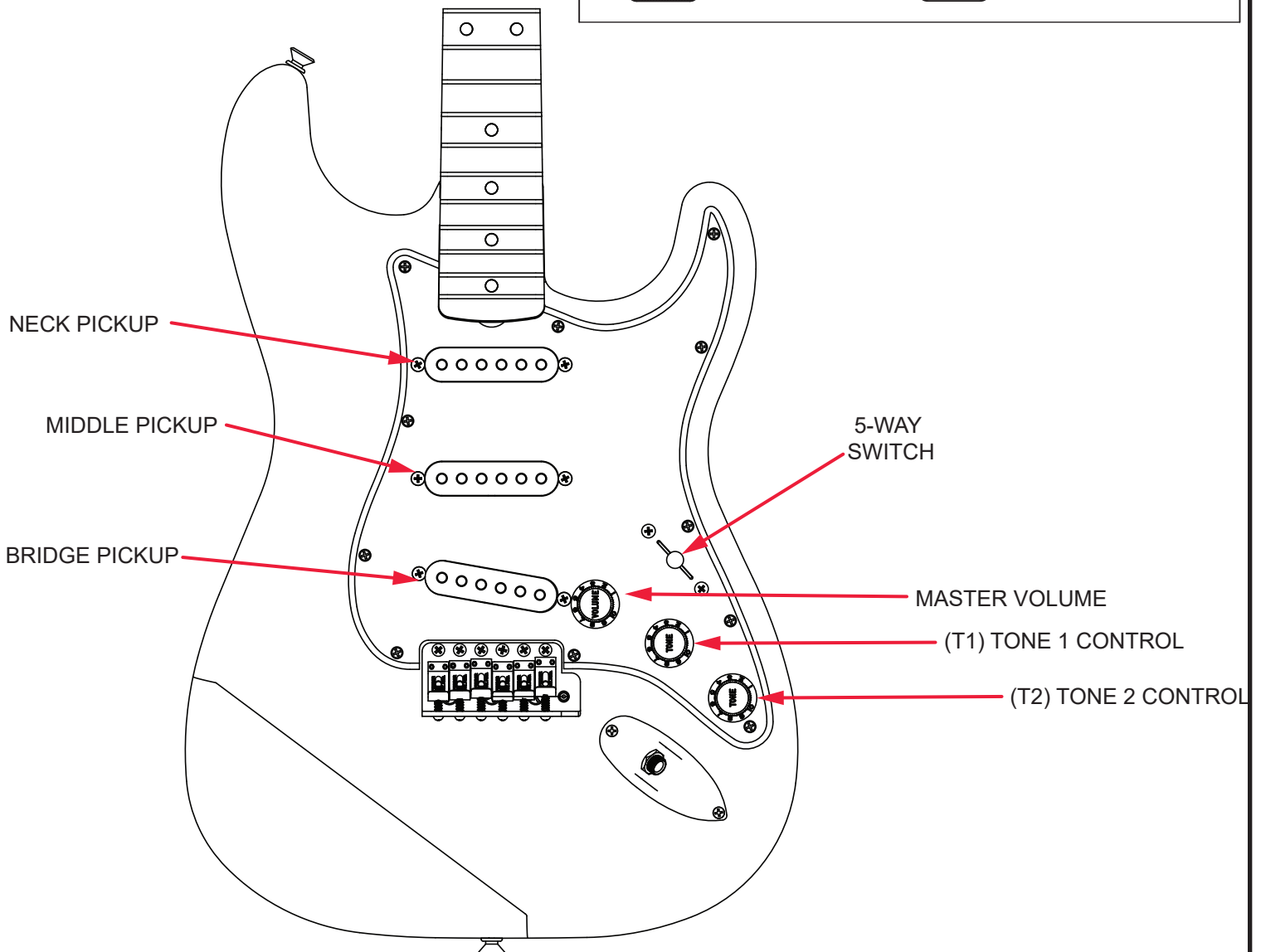


AMERICAN VINTAGE II 1961 STRATOCASTER® (0110250XXX)

SWITCH AND CONTROL FUNCTION

T1	T1	T1	T1&T2	T2	5 WAY SWITCH POSITION
					5 WAY SWITCH POSITION
					NECK PICKUP
					MIDDLE PICKUP
					BRIDGE PICKUP

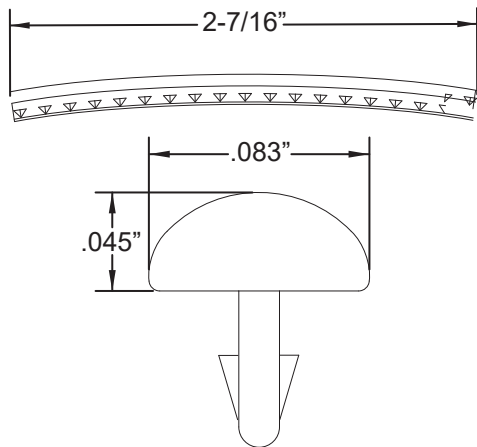
PICKUP IS ON PICKUP IS OFF



AMERICAN VINTAGE II 1961 STRATOCASTER® (0110250XXX)

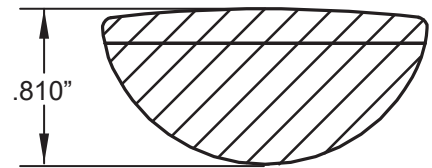
ADDITIONAL SPECIFICATION DETAIL

FRET SIZE: VINTAGE
(FRET DIMENSIONS
ARE BEFORE INSTALLATION)

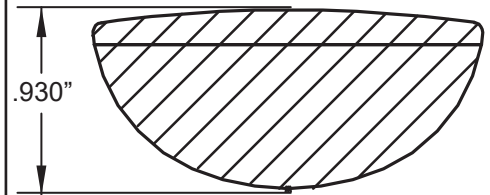


PLEASE NOTE: AS EACH NECK IS SANDED & FINISHED BY HAND, THICKNESS DIMENSIONS MAY VARY SLIGHTLY FROM THOSE SHOWN.

NECK PROFILE: VINT "C"

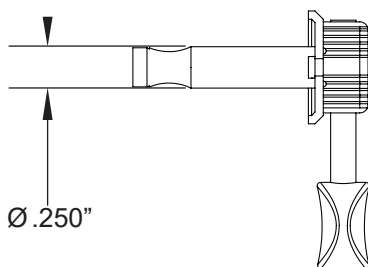


1ST FRET PROFILE

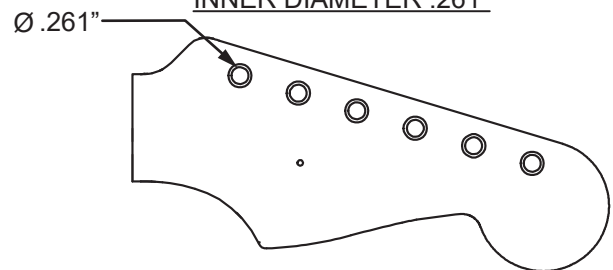


12TH FRET PROFILE

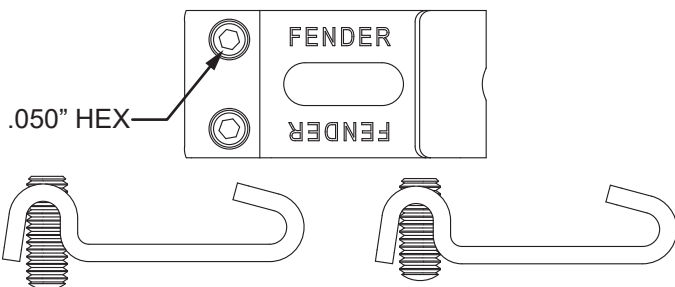
TUNING MACHINE SET W/HDWR P/N 0992074000
OUTER SHAFT DIAMETER .250"



TUNING MACHINE THRU-HOLE
INNER DIAMETER .261"



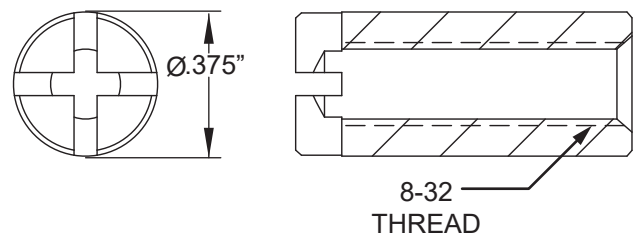
SADDLE HEIGHT ADJUSTMENT WRENCH:
.050" HEX KEY P/N 0018531049



SADDLE HEIGHT ADJUSTMENT SCREWS:

TALL: P/N 0075384000 SHORT: P/N 0075536000

TRUSS ROD NUT P/N 0058171000



LOGO: VINTAGE 1961 STRATOCASTER
APPLIED OVER THE FINISH



PICKUP SPECIFICATIONS

POSITION	MAGNETS	DC RESISTANCE	POLARITY
NECK	ALNICO 5 BEVELED	5.6 - 6.2KΩ	SOUTH
MIDDLE	ALNICO 5 BEVELED	5.6 - 6.2KΩ	SOUTH
BRIDGE	ALNICO 5 BEVELED	5.6 - 6.2KΩ	SOUTH