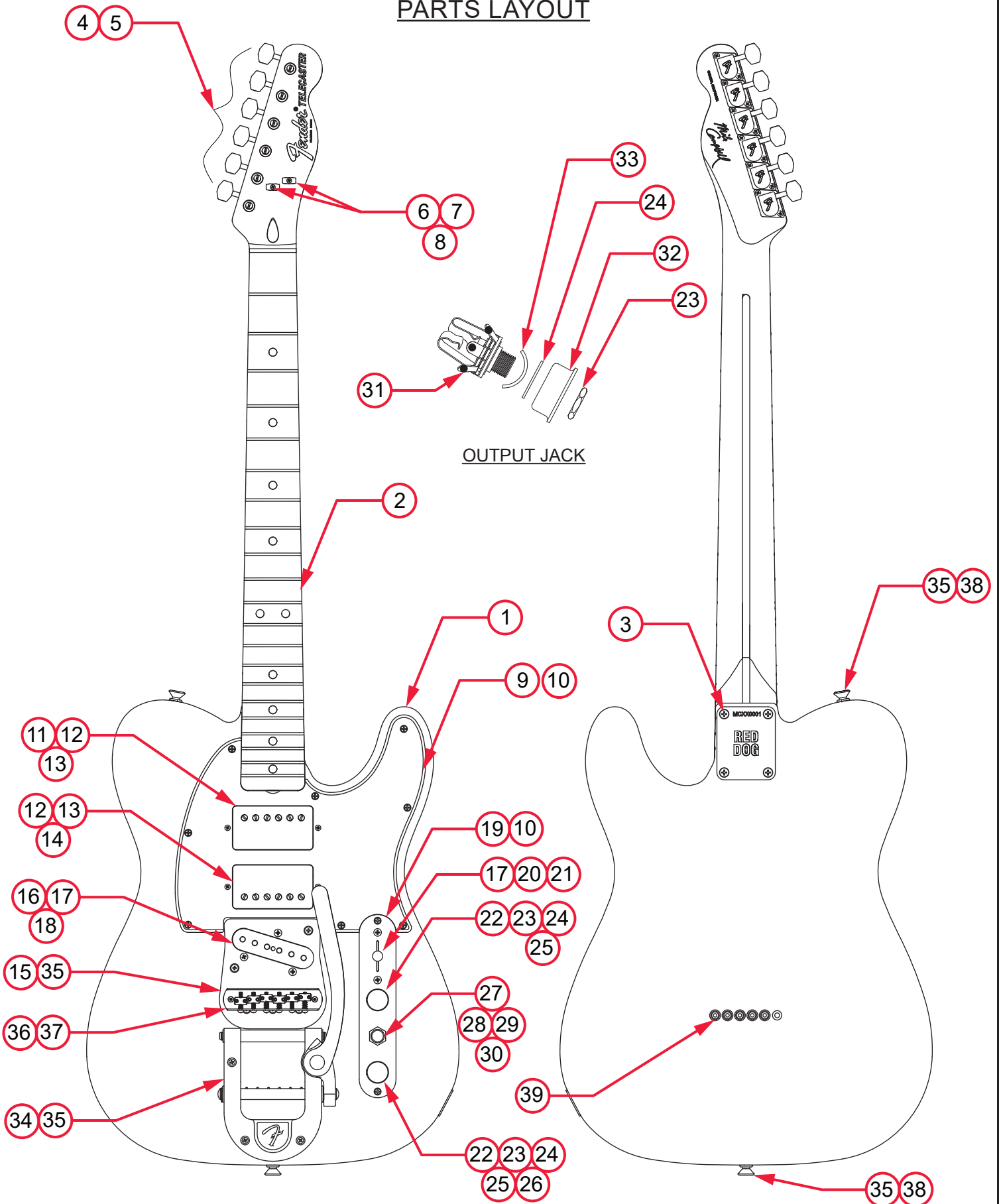


MIKE CAMPBELL RED DOG TELECASTER (0117472725)

PARTS LAYOUT



MIKE CAMPBELL RED DOG TELECASTER (0117472725)

PARTS LIST

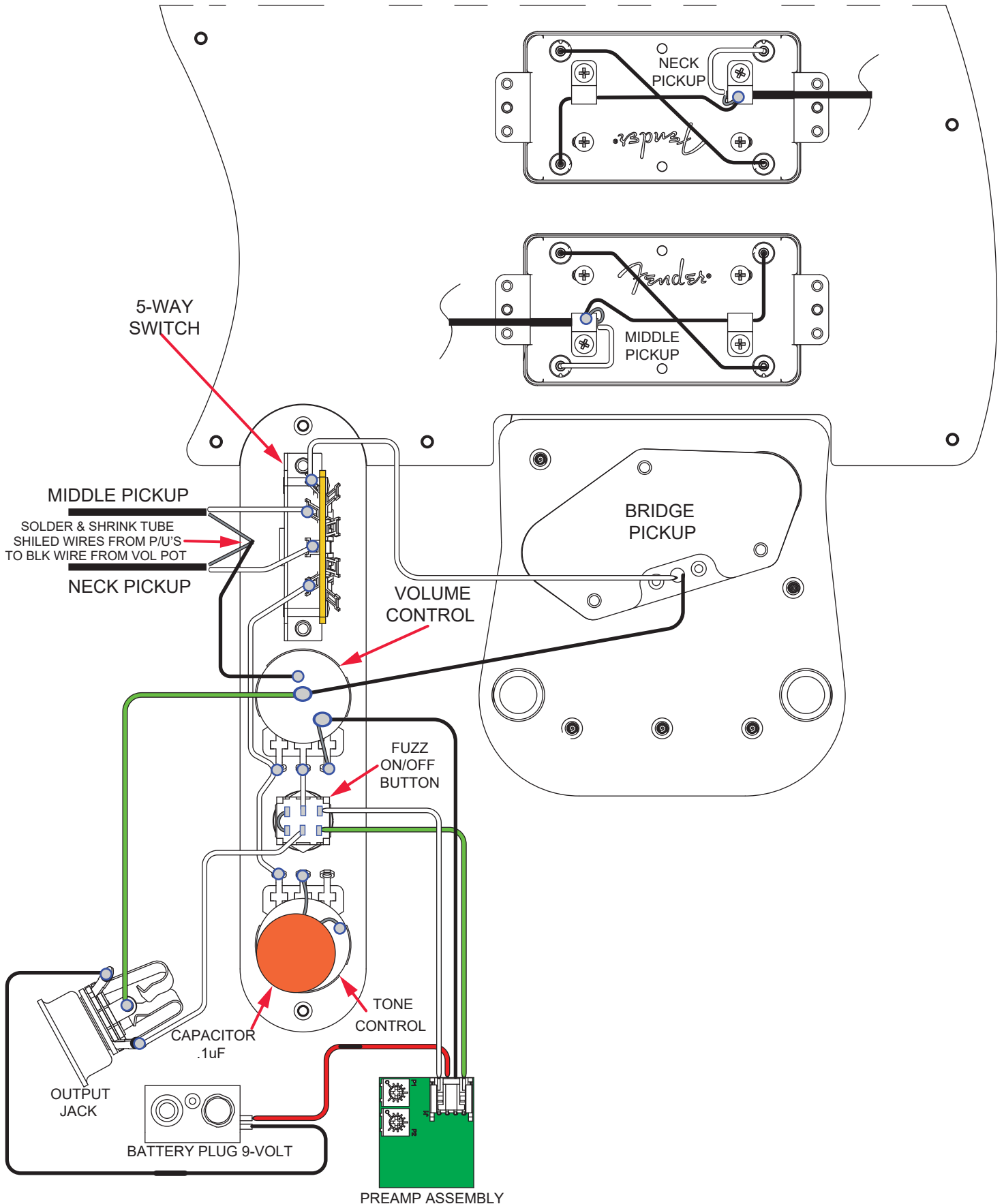
| REF# | DESCRIPTION | PART NUMBER |
|------|---|-------------|
| 1 | BODY RED DOG TELE | 7728955525 |
| 2 | NECK ASSY RED DOG TELE MPL | 7728956000 |
| 3 | SCREW SMA 8 X 1-3/4 OHP NI HRLM | 0015636300 |
| 4 | KEY GTR 70S F SHORT RH CHR HRLM | 0076186300 |
| 5 | SCREW SMAB 3 X 3/8 RHP STL NI HRLM | 0011357300 |
| 6 | STRING TREE VINT NI HRLM | 0093569300 |
| 7 | SPACER STRING TREE 65 STRAT NYLON | 0093999000 |
| 8 | SCREW SMA #3 X 5/8 RHP STL HRLM | 0011358300 |
| 9 | PICKGUARD RED DOG TELE P/B/P HRLM | 7728961300 |
| 10 | SCREW SMAB 4 X 1/2 OHP NI HRLM | 0015578300 |
| 11 | PICKUP ASSY RED DOG TELE NK HRLM | 7728958000 |
| 12 | SCREW MACH 3-48 X 7/8 RHP NI HRLM | 0058404300 |
| 13 | SPRING HB MTG 3/4" | 0050167049 |
| 14 | PICKUP ASSY RED DOG TELE MID HRLM | 7728959000 |
| 15 | BRIDGE PLATE TELE C/S HRLM | 0059074300 |
| 16 | PICKUP ASSY RED DOG TELE BRDG | 7728960000 |
| 17 | SCREW 6-32 X 5/8 RHP STL NI HRLM | 0015800300 |
| 18 | TUBING LATEX CUT .25OD X .125ID X .375L | 0036878000 |
| 19 | TELE CONTROL PLATE RED DOG HRLM | 7728971300 |
| 20 | SWITCH 5 WAY LEVER | 0991367000 |
| 21 | KNOB LEVER SWITCH WHT HRLM | 0019554300 |
| 22 | KNOB DIMAOND KNURL BRASS CHR HRLM W/SET SCREW | 0013359300 |
| 23 | NUT HEX 3/8-32 X 3/32 TK NI | 0016352049 |
| 24 | WASHER LOCKING INTL 3/8 X .687 X .035 NI | 0016436049 |
| 25 | CONTROL 1-MEG 10% AUDIO METAL | 0019066049 |
| 26 | CAP CERAMIC DISC .1 MFD 50 V | 0094251049 |
| 27 | SWITCH PUSH BUTTON DPDT LATCHING LP W/HDWR | 7730005000 |
| 28 | WIRE HARNESS OUTPUT 4-PIN 24GA 3.5" | 7729501000 |
| 29 | BATTERY PLUG 9 VOLT | 0017458000 |
| 30 | PREAMP ASSY RED DOG TELE | 7728963000 |
| 31 | JACK PHONE STEREO 12B | 0013043049 |
| 32 | FERRULE JACK TELE NI HRLM | 0010363370 |
| 33 | RETAINER JACK NI PLT TELE | 0010355069 |
| 34 | B5 BIGSBY F LOGO POL ALUM HRLM W/HDWR | 0063503300 |
| 35 | SCREW WOOD 6 X 1 OHP NI HRLM | 0016188300 |
| | | |

*= NOT PICTURED IN DIAGRAM



MIKE CAMPBELL RED DOG TELECASTER (0117472725)

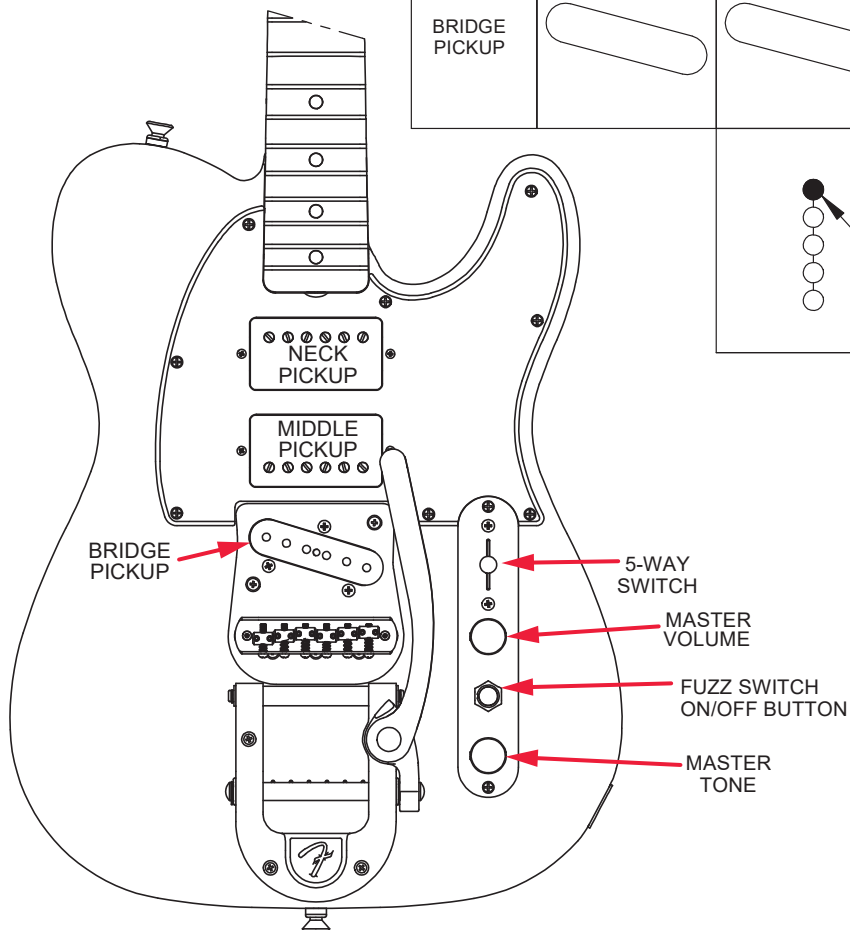
WIRING ASSEMBLY



MIKE CAMPBELL RED DOG TELECASTER (0117472725)

SWITCH AND CONTROL FUNCTION

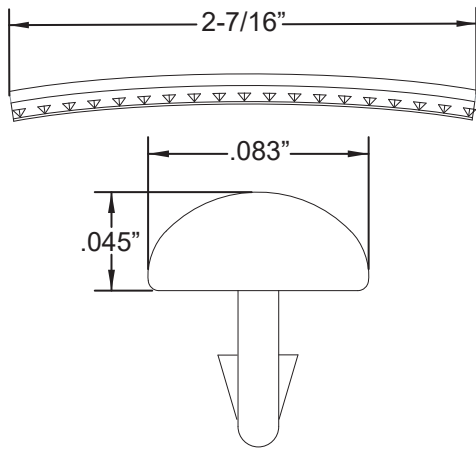
| | | | | | |
|---------------|--|---------------------------|--|--------------|---------------|
| 5-WAY SWITCH | | | | | |
| NECK PICKUP | | | | | |
| MIDDLE PICKUP | | | | | |
| BRIDGE PICKUP | | | | | |
| | | INDICATES SWITCH POSITION | | | |
| | | | | PICKUP IS ON | PICKUP IS OFF |



MIKE CAMPBELL RED DOG TELECASTER (0117472725)

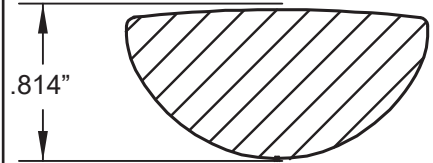
ADDITIONAL SPECIFICATION DETAIL

FRET SIZE: MEDIUM JUMBO
(FRET DIMENSIONS ARE BEFORE INSTALLATION)

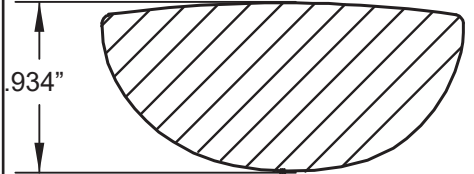


PLEASE NOTE: AS EACH NECK IS SANDED & FINISHED BY HAND, THICKNESS DIMENSIONS MAY VARY SLIGHTLY FROM THOSE SHOWN.

NECK PROFILE: MIKE CAMPBELL "C"

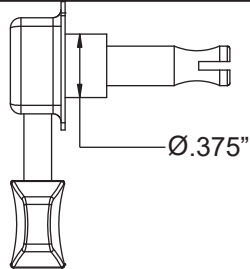


1ST FRET PROFILE

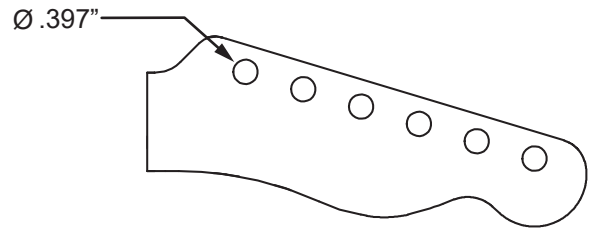


12TH FRET PROFILE

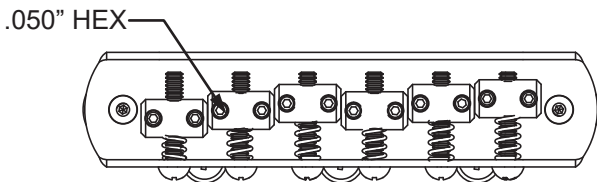
TUNING MACHINES : P/N 0076186300
OUTER SHAFT DIAMETER .375"



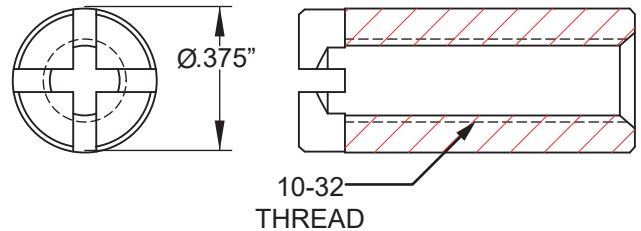
TUNING MACHINE THRU-HOLE
INNER DIAMETER .397"



SADDLE HEIGHT ADJUSTMENT WRENCH:
.050" HEX KEY P/N 0018531049



TRUSS ROD NUT P/N 0994944000



TALL: P/N 0016089300 SHORT: P/N 0040196300

LOGO: 72 TELECASTER
APPLIED UNDER THE FINISH



PICKUP SPECIFICATIONS

| POSITION | MAGNETS | DC RESISTANCE | POLARITY |
|----------|--------------------|-----------------|-------------|
| NECK | BAR ALINCO 2 | 7.10 - 7.54KΩ | SOUTH NORTH |
| MIDDLE | BAR ALINCO 2 | 7.38 - 7.84KΩ | SOUTH NORTH |
| BRIDGE | ALNICO 3 UNBEVELED | 10.14 - 10.76KΩ | SOUTH |