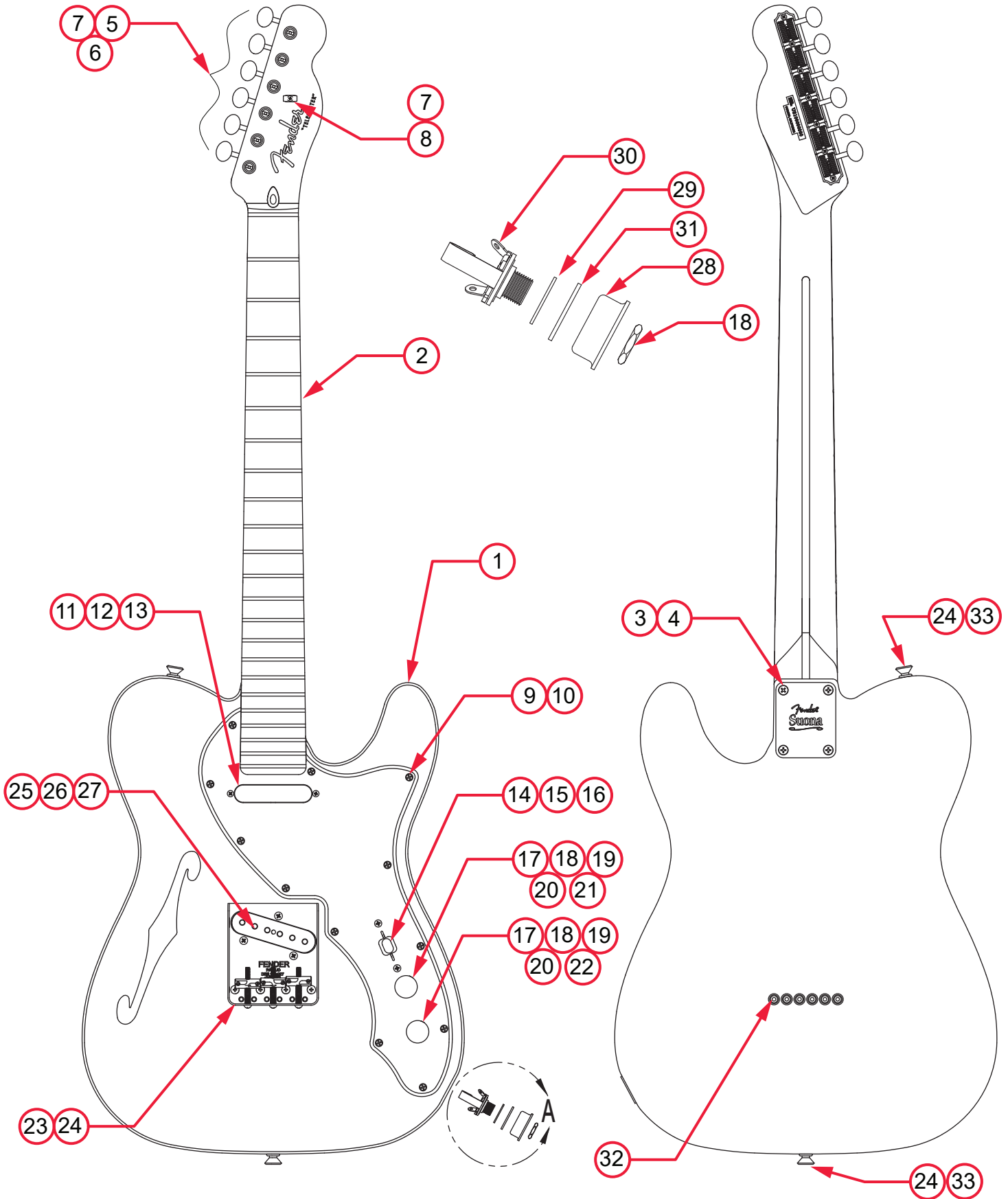


# SUONA TELECASTER® THINLINE (0170281830)

## PARTS LAYOUT



# SUONA TELECASTER® THINLINE (0170281830)

## PARTS LIST

REF#	DESCRIPTION	PART NUMBER
1	BODY SUONA TELE THINLINE	7722606530
2	NECK ASSY SUONA TELE THINLINE	7722607000
3	PLATE NECK SUONA GUITAR/BASS	7722542000
4	SCREW SMA 8 X 1-2/3 OHP NI	0015636049
5	KEY SET GTR VINT FENDER DLX NI WITH HDWR	0992074000
6	BUSHING STRING POST VINT	0994946000
7	SCREW SMAB 3 X 3/8 RHP STL NI	0011357049
8	STRING TREE VINTAGE NI W/HDWR	0994910000
9	PICKGUARD TELE THINLINE VINYL B/W/B	7716483000
10	SCREW SMAB 4 X 1/2 OHP NI	0015578049
11	PICKUP ASSY TWISTED TELE NK CHR 15" LEADS	7725904000
12	TUBING SILICONE RUBBER .500 RED	0063398000
13	SCREW MACH 4-40 X 7/8 RHP STL NI	7700222000
14	SWITCH 3-WAY LEVER	0038993049
15	SCREW MACH 6-32 X 5/8 RHP NI	0021417049
16	KNOB SWITCH TELE TOP HAT	0994937000
17	KNOB KNURLED 52 TELE UPG CHR W/SET SCREW (2)	0094040049
18	NUT HEX 3/8-32 X 3/32 TK NI	0016352049
19	WASHER LCOK INTL 3/8 X .500 X .020 NI	0022384049
20	CONTROL 250K 10% AUDIO METAL	0019064049
21	PCB ASSY TREBLE BLEED AM PRO STRAT/TELE	7711092000
22	CAP CD .05uF 100V 20%	0015552049
23	BRIDGE ASSY 60'S QUILT TOP TELE NO P/U	7715210000
23A	BRIDGE PLATE TELE PAT# C/S	0058257000
23B	BRIDGE SECTION AM PRO TELE REVERSE	7710421000
23C	BRIDGE SECTION AM PRO TELE STD	7709970000
23D	SCREW MACH 6-32 X 1-1/4 RHP STL NI	0015834049
23E	SPRING COMPRESASION 1.060" #144	0018689049
23F	SET SCREW #6-32 X 7/16 SL OP STL NI	0016105049
23G	SET SCREW #6-32 X 3/8 SL OP STL NI	0094038000
24	SCREW WOOD 6 X 1 OHP NI	0016188049
25	PICKUP ASSY SUONA TELE BRIDGE	7724223000
26	SCREW 6-32 X 5/8 RHP STL NI	0015800049
27	TUBING LATEX CUT .250OD X .125ID X .425L	0039409000

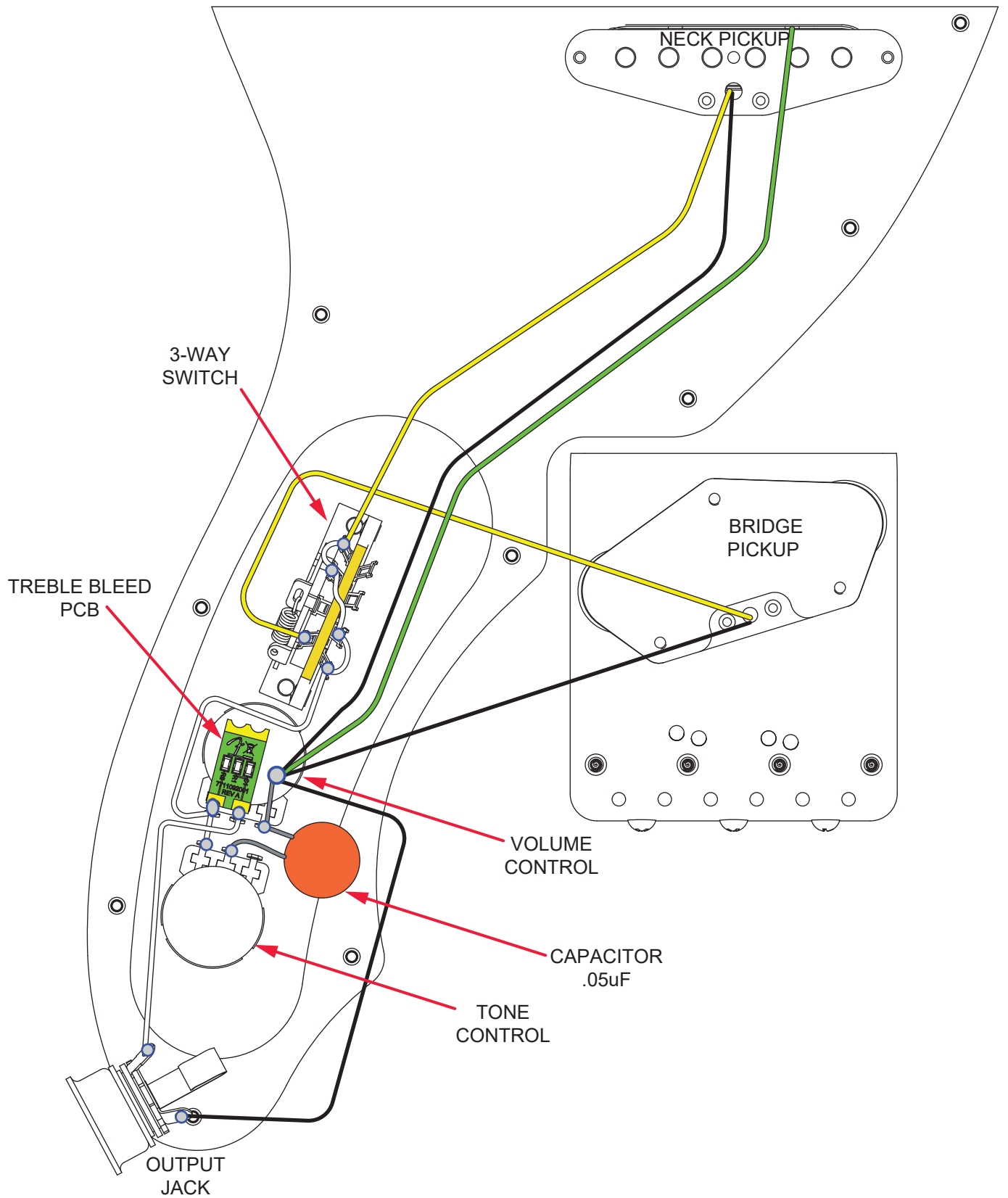
\*= NOT PICTURED IN DIAGRAM





# SUONA TELECASTER® THINLINE (0170281830)

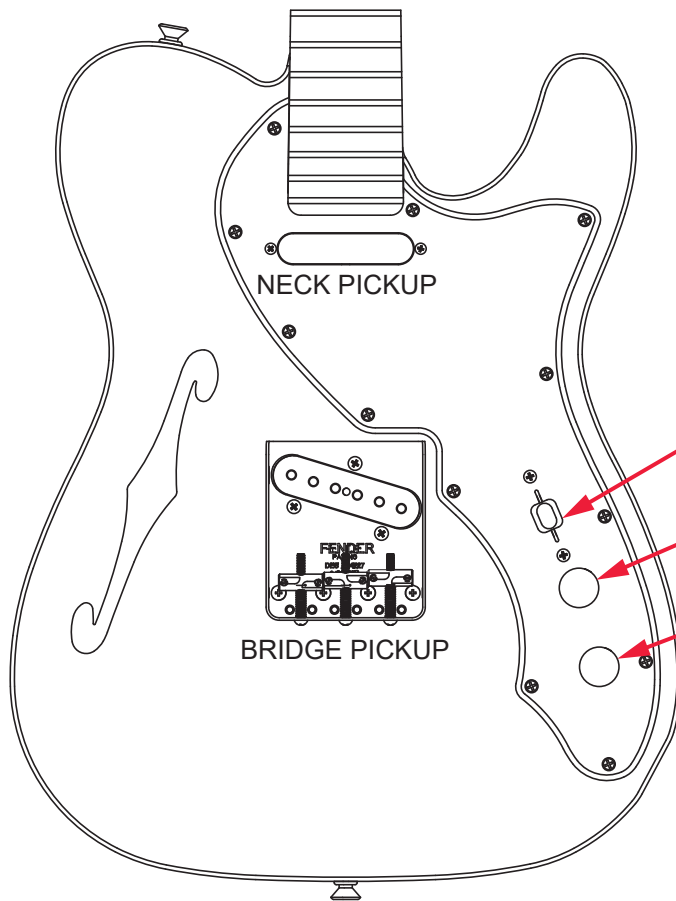
## WIRING ASSEMBLY



# SUONA TELECASTER® THINLINE (0170281830)

## SWITCH AND CONTROL FUNCTION

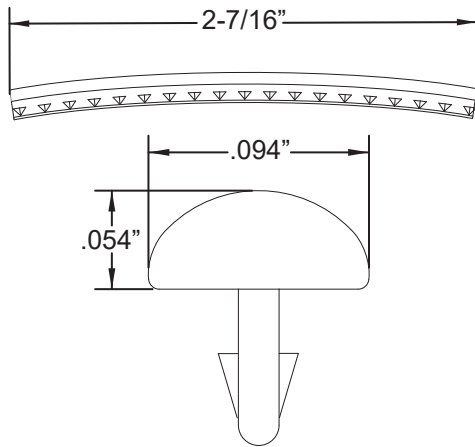
3 WAY SWITCH POSITION			
			← 3 WAY SWITCH POSITION
			← NECK PICKUP
			← BRIDGE PICKUP
	PICKUP IS ON		INDICATES POSITION OF 3 WAY SWITCH 
	PICKUP IS OFF		



# SUONA TELECASTER® THINLINE (0170281830)

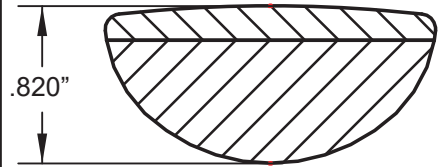
## ADDITIONAL SPECIFICATION DETAIL

**FRET SIZE: JUMBO NARROW**  
(FRET DIMENSIONS ARE BEFORE INSTALLATION)

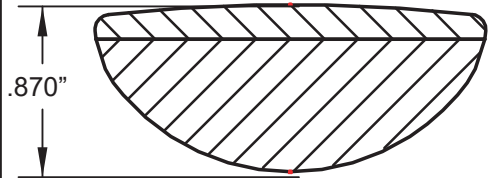


PLEASE NOTE: AS EACH NECK IS SANDED & FINISHED BY HAND, THICKNESS DIMENSIONS MAY VARY SLIGHTLY FROM THOSE SHOWN.

**NECK PROFILE: MODERN "C"**

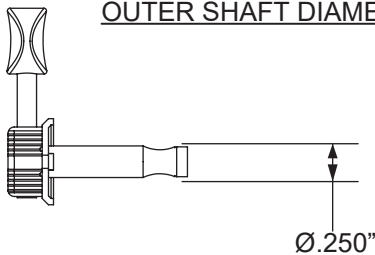


1ST FRET PROFILE

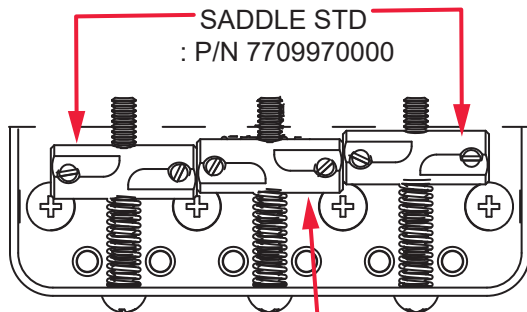
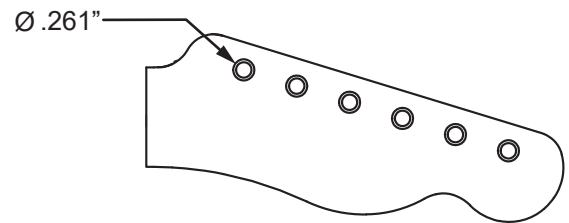


12TH FRET PROFILE

**TUNING MACHINES : P/N 0992074000**  
**OUTER SHAFT DIAMETER .250"**

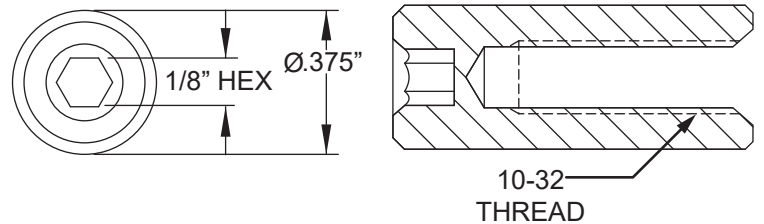


**TUNING MACHINE THRU-HOLE**  
**INNER DIAMETER .261"**



**SADDLE REVERSE**  
**: P/N 7710421000**

**TRUSS ROD NUT P/N 0994943000**  
**TRUSS ROD ADJUSTMENT WRENCH:**  
**1/8" HEX KEY P/N 0023811049**



**LOGO: AM VINT II BLACKGUARD TELE**  
**APPLIED OVER THE FINISH**



### PICKUP SPECIFICATIONS

POSITION	MAGNETS	DC RESISTANCE	POLARITY
NECK	ALNICO 5 UNBEVELED	5.7 - 6.3KΩ	NORTH
BRIDGE	ALNICO 2 BEVELED	9.5 - 10.1KΩ	NORTH