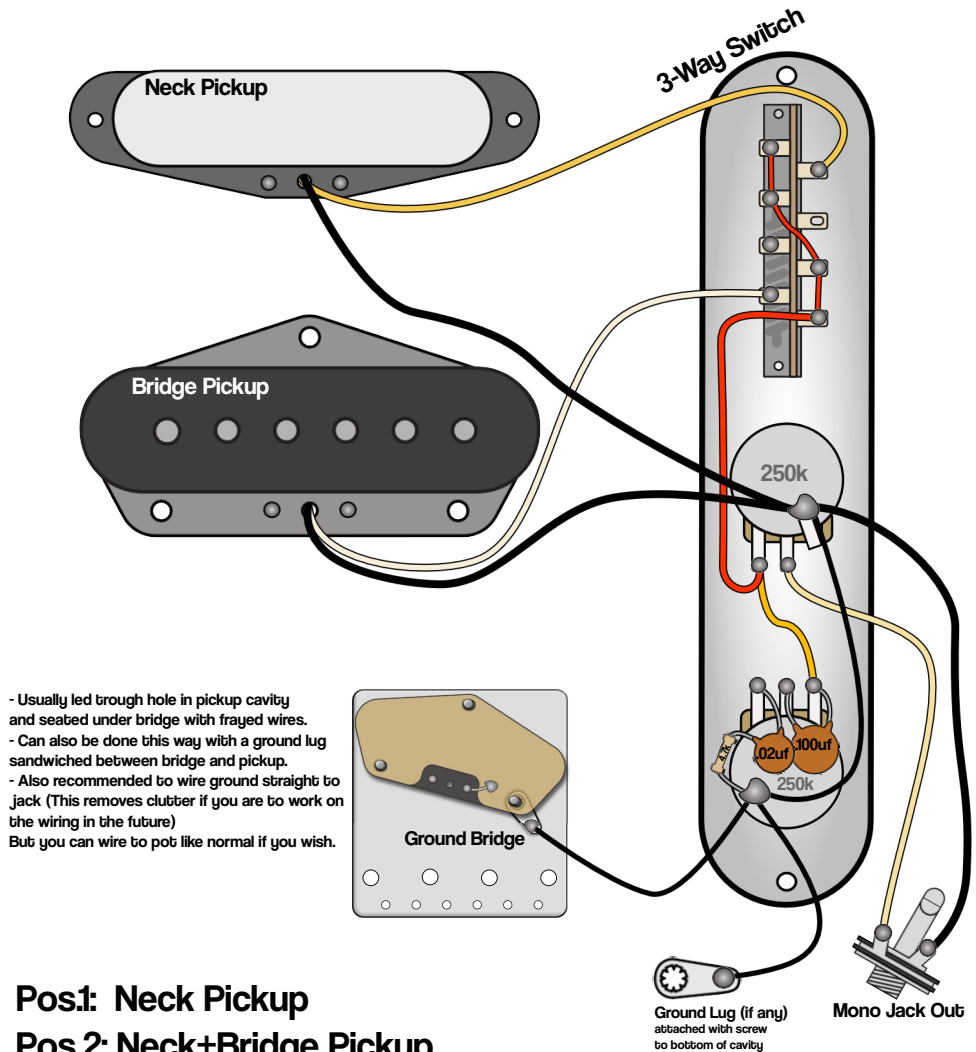


# Highway One Telecaster Wiring

011-1200/1202/1260/1262 | 011-3502 (Hw1 Texas)

(Greasebucket Mod)



- Usually led through hole in pickup cavity and seated under bridge with frayed wires.
  - Can also be done this way with a ground lug sandwiched between bridge and pickup.
  - Also recommended to wire ground straight to jack (This removes clutter if you are to work on the wiring in the future)
- But you can wire to pot like normal if you wish.

**Pos.1: Neck Pickup**  
**Pos.2: Neck+Bridge Pickup**  
**Pos.3: Bridge Pickup**

3.13.2026  
Rev.A

[www.axefiles.com](http://www.axefiles.com)

Graphics by Gerry Haze. all rights reserved